



July - September 2023

The Highlight

Quarterly Newsletter

Issue No. 13

**Partnerships Key
to Lighting up
Rural Areas**

REREC
Rural Electrification and Renewable Energy Corporation

INSIDE



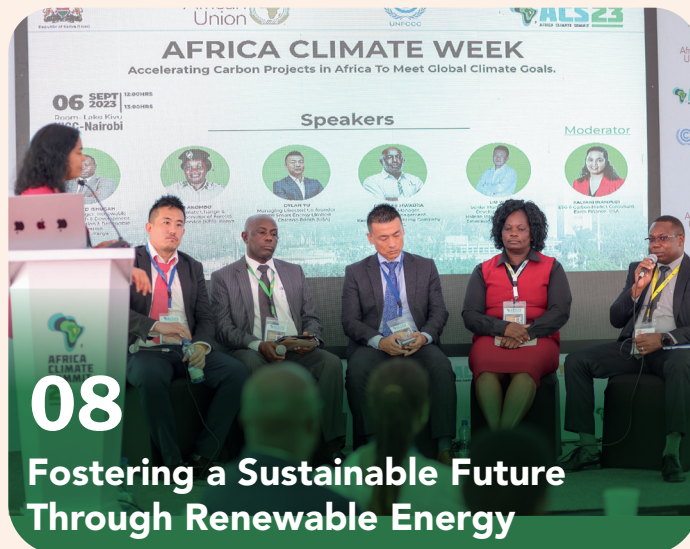
02

Partnerships Key to Lighting up Rural Areas



12

Embracing Clean Cooking Technologies: The Fireless Jiko



08

Fostering a Sustainable Future Through Renewable Energy

04

Powering Dreams:

Partnerships Key to Lighting up Rural Areas

06

Bridging the Knowledge Gap:

Understanding the role Kenya's Energy Trio; REREC, KETRACO & Kenya Power

10

"A Shilling for a Shilling"

Accelerating Rural Electrification

14

Implementation of the Citizen's Service Delivery Charter

16

Emotional Wellness

Nurturing Your Inner Balance

Editor:
Wangari Githii

Editor-In-Chief:
Dr. Rose Mkalama

Layout Design & Print:
Avant Communications
Isaac Gicheha



Copyright © 2023 REREC

Reproduction of this publication for educational and other non-commercial purposes is authorized with written permission from the copyright holder provided the source is fully acknowledged.

Reproduction of this publication for resale or other commercial purposes is prohibited, unless with written permission of the copyright holder.

Editor's Note

Welcome to the first edition of The Highlight for the year 2023/2024. As we embark on a new year filled with possibilities, we find ourselves at the intersection of progress and responsibility. In this edition, we delve into topics that are not only timely but crucial for the sustainable future we envision.

The Corporation believes in the power of small actions that collectively create a significant impact. This edition is dedicated to exploring sustainable practices, such as the use of Sustainable Aviation Fuels, to the collective efforts that shape our communities. Let's embrace sustainability as a way of life and pave the way for a greener, more resilient future.

The winds of change are blowing, and they bring with them the promise of a cleaner, more sustainable energy landscape. In this edition, we shed light on the myriad benefits of renewable energy and how we can convert waste to energy for our benefit. From reducing our carbon footprint to fostering energy independence, the advantages are both environmental and economic. Join us in exploring the innovations, breakthroughs, and inspiring stories that highlight the transformative power of renewable energy.

Access to electricity is a fundamental right that has the power to transform lives. Yet, many rural communities in Kenya still lack reliable and sustainable electrification. In these pages, we delve into the impact of rural electrification, not only in terms of lighting up homes but also in catalyzing economic growth, enhancing education, and improving healthcare. By shining a light on successful initiatives by the Corporation and the how REREC ensures the customer is a priority, we aim to foster a deeper understanding of the importance of powering up Kenya.



Wangari Githii
Editor

As we navigate the complexities of our day-to-day activities, let this edition of The Highlight serve as a source of inspiration and information. Together, let's build a future where sustainability is not just a goal but a reality, where renewable energy powers our progress, and where rural electrification lights up the lives of those who need it most.

We value and appreciate your feedback. Engage us through info@rerec.co.ke



RERECKenya



REREC_Kenya



RERECMashinani



RERECMashinani



Partnerships Key to Lighting up Rural Areas

By Dr. Rose Mkalama

Going into the first quarter of the year is always a good opportunity to reflect on the developments that any country has made regarding critical areas such as energy, if not for anything else, at least for a sense of accountability that is due to the general population.

In Kenya, rural electrification has remained a key talking point, besides being both a driver and an indicator of economic development.

It is necessary, therefore, that we engage in a conversation of how to progressively and sustainably electrify the country.

“This is part of the Government's determination to establish and ride on strategic collaborations with the aim of increasing electricity connectivity in the country.

The current Government, through the Rural Electrification and Renewable Energy Corporation (REREC) and other players, has invested heavily and made huge achievements in availing electricity and other sources of renewable energy to Kenyan citizens across the country including the underserved areas.

Government has over the years made a conscious decision to ensure electrification of rural areas is achieved. Development partners have been a key partner in this journey. Among the key developments was the launch of the Electrification of Public Facilities Project that the Government co-funded with partners from the Middle East to the tune of USD 57 Million.

The key focus is the electrification of public facilities, including schools, hospitals, and shopping centers.

In total, over 510 projects are currently being implemented. These projects will yield over 2,000 kilometers of middle voltage distribution lines in Nyanza and Western, North and South Rift, Central and Upper Eastern, as well as Lower Eastern and Coast regions.

Arising from the 510 projects under this project, some 1,200 public facilities are being connected to electricity across 131 constituencies in 36 counties. This will translate to over 35,000 connections to households across the country.

This is an important milestone because it enables many Kenyans to initiate their individual developmental initiatives like opening up of small businesses.

From the perspective of the conveniences created by electrification, the quality of lives has improved significantly. This has come as a result of better communication in rural areas, more available internet connectivity, increased business opportunities, longer working hours, and creation of more jobs across the sectors.

Also important is that education standards in the rural areas have improved, as has service delivery in health centres in the newly powered health facilities.

In social spheres, rural electrification has also reorganized leisure and entertainment in shopping centres, something that is bound to improve modernization of the concerned areas.

Despite all these developments, more needs to be done to ensure that Kenya does not drop the ball. We need to keep safeguarding our vaunted place as a leader in green energy, not just in Africa, but indeed globally.

One critical area of focus should be how we emphasise and use of renewable sources of energy as alternatives to the current forms that are not only pricy, but also potentially harmful to the environment.

To ensure resilience and sustainability of such initiatives, there is need to reconsider the current funding model in order to broaden rural electrification of public amenities.

So far, REREC has innovated what it calls the matching fund, or a shilling-for-a shilling initiative

where the Corporation partners with county governments, and the national constituency development fund for co-funding of projects. For every 1 shilling a county/constituency contributes, REREC matches it with a shilling, and together we implement electrification projects in priority areas within the Constituencies. Since 2016/2017 financial year, the Corporation has executed 847 matching fund projects at a cost of Ksh 2.3 Billion.

This is part of the Government's determination to establish and ride on strategic collaborations with the aim of increasing electricity connectivity in the country. This will help in building Kenya's human and institutional capacity to work towards the achievement of sustainable socio-economic development.

If more players partner with the Government in this cause, there shall be tremendous development in electrification of rural and other marginalized areas, a sure way to economic sustainability.

Dr. Rose Mkalama is the GM IEC, Rural Electrification and Renewable Energy Corporation (REREC).



Electrified Village in Malindi County

Powering Dreams:



Transforming Makueni County.

By Collins Waswa

In the heart of Makueni County, a remarkable transformation is underway. The Government of Makueni County, in partnership with the Rural Electrification and Renewable Energy Corporation (REREC), has launched electrification projects that promise to bring a new dawn of progress and opportunity to the region. Through a Matching Fund initiative, these projects involve the installation of power lines, transformers, and meters, with the overarching goal of providing a reliable supply of electricity to homes, institutions, and businesses across the county.

The launch of this electrification program has generated a great sense of hope and excitement among the residents of Makueni County. The one-week programme, launched in September, which saw active

participation from community leaders, government officials, and local residents, represents a pivotal moment in the region's history. The County Executive Committee Member for Infrastructure, Transport, Public Works, Housing, and Energy, Eng. Sebastian Kyoni, who led the county team highlighted the vital significance of this initiative.

He emphasized that electrification is not merely about lighting up homes but about empowering entire communities. Access to electricity is a catalyst for progress, touching every aspect of life. It enhances education, healthcare, entrepreneurial activities, and the overall quality of life for residents. With this electrification program, Makueni County is taking a giant step forward towards a brighter and more promising future.

“The electrification program in Makueni County encompasses 12 different projects

Community leaders and residents expressed their gratitude for the initiative, acknowledging REREC's efforts as a true game-changer. For many, this is indeed a new dawn. One resident eloquently captured the sentiment by stating that they can now work diligently to turn their dreams into reality. The promise of reliable electricity is igniting aspirations and lighting up possibilities.

The presence of REREC officials during the launch added to the significance of the event. Eng. Mercy Rotich, representing the Regional Manager for Nairobi, Eastern, and North Eastern Region, Eng. Jonathan Mbutu, and other REREC representatives, including Manager

Monitoring and Evaluation, Diana Khalwale, and Principal Business Development Officer, Eng. Naomi Nthambi, underscored REREC's commitment to the electrification of rural areas and the transformative potential of these projects.

The electrification program in Makueni County encompasses 12 different projects, each with the aim of delivering electricity to the residents before the year's end. These projects are poised to benefit a substantial number of households, business premises, and institutions, with a cumulative impact on at least 780 locations. This means that hundreds of families will soon experience the convenience of reliable electric lighting, local businesses

will have the power to thrive, and educational institutions will have the tools to provide better learning environments.

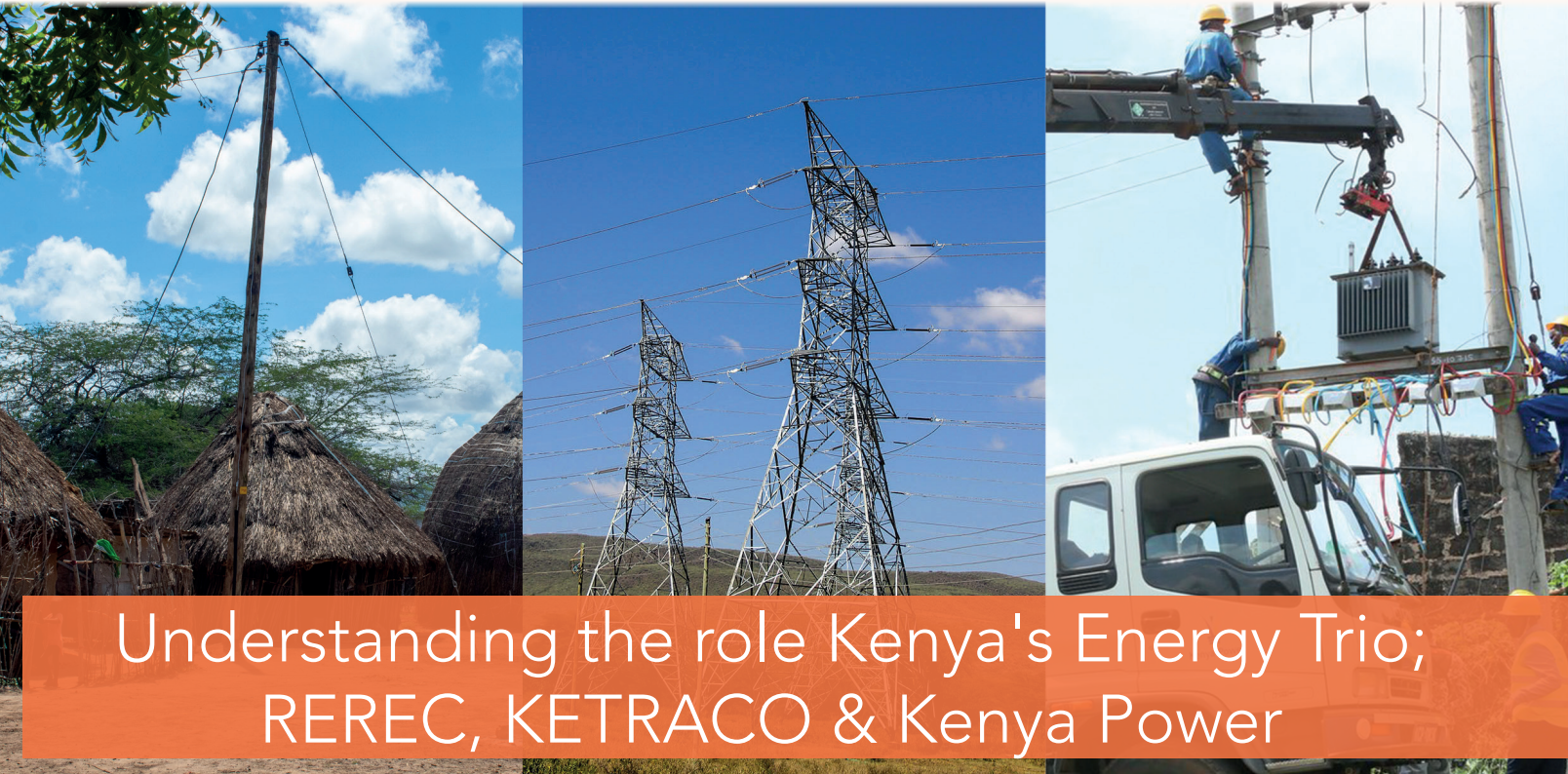
The launch of these matching fund projects represents more than the extension of power lines; it signifies the empowerment of communities, the fulfillment of dreams, and the realization of a brighter and more prosperous Makueni County. As the projects progress, residents are looking forward to a future where they can harness the potential of electricity to create a thriving and dynamic community. With power in their hands, they are now ready to illuminate their own path towards progress and prosperity.

REREC officials at the launch of the Kinyong'o water and Nyang'ang'a/Uma Primary school electrification project. The two projects are of 12 projects which will benefit 155 customers



REREC team led by Eng Mercy Rotich on behalf of the Regional Manager for Nairobi, Eastern and North Eastern Region and the Makueni County government officials during the launch matching fund projects in the area.

Bridging the Knowledge Gap:



Understanding the role Kenya's Energy Trio; REREC, KETRACO & Kenya Power

By: Fiona Wamaitha

“These organizations collectively contribute to a more inclusive, sustainable, and electrified future for Kenya, where access to reliable and clean energy is a fundamental right for all.

In the ever-evolving landscape of Kenya's energy sector, there are three vital organizations; Rural Electrification and Renewable Energy Corporation (REREC), Kenya Electricity Transmission Company Limited (KETRACO) and the Kenya Power and Lighting Company (KPLC),

that collectively play crucial roles in ensuring a reliable power supply, fostering rural electrification, and promoting sustainable energy solutions. These organizations are the backbone of Kenya's energy ecosystem, each with its unique responsibilities and objectives.

Rural Electrification and Renewable Energy Corporation (REREC)

REREC is a specialized government institution in Kenya with a specific focus on rural electrification and the promotion of the use of renewable energy. Its mission is to extend access to electricity to remote and underserved areas while championing sustainable and eco-friendly energy solutions. REREC's key responsibilities include:

Rural Electrification Programs: REREC spearheads rural electrification initiatives, targeting marginalized and off-grid regions that traditionally lacked access to electricity.

Renewable Energy Development. REREC is at the forefront of promoting and developing renewable energy projects, such as solar, wind, and hydropower, as a means to generate clean and sustainable electricity.

Energy Efficiency and Conservation. The organization also promotes energy efficiency and conservation practices to reduce wastage and make the most of available energy resources.

Funding and Monitoring. REREC is involved in funding, monitoring, and evaluating electrification projects, ensuring that they are implemented efficiently and serve their intended purpose.

Kenya Electricity Transmission Company Limited (KETRACO)

KETRACO is Kenya's designated electricity transmission Company. Its key role is to transmit bulk electricity from power generation facilities to various substations and grid points, ensuring a reliable and efficient movement of electricity across the nation. Their responsibilities include:

Electricity Transmission. KETRACO manages the high-voltage transmission network, facilitating the transportation of electricity from generating stations to distribution centers. This includes the use of transmission lines, substations, and other infrastructure designed for high-voltage electricity.

Grid Development and Maintenance. The company is responsible for the development, expansion, and maintenance of the national electricity grid, ensuring that the network remains robust and reliable.

Integration of Diverse Power Sources. KETRACO plays a crucial role in integrating power from diverse sources, including conventional power plants and renewable energy projects, into the national grid.

Cross-Border Power Trade. As the operator of the high-voltage grid, KETRACO also facilitates cross-border power trade, allowing Kenya to import and export electricity to neighbouring countries.

Kenya Power and Lighting Company (KPLC)

Kenya Power and Lighting Company, or simply "KPLC," is the principal electricity distribution and retail company in Kenya. It bridges the gap between power generation and the end-users by ensuring the efficient and equitable distribution of electricity across the nation. Some of their key responsibilities include:

Electricity Distribution. Kenya Power is responsible for transmitting electricity from power producers to homes, businesses, and industries in Kenya. This involves delivering power not only to urban centers but also to peri-urban areas and remote regions.

Billing and Revenue Collection. Kenya Power handles the billing process for electricity consumption and the collection of revenue from consumers, which is essential for the sustainability of the entire energy ecosystem.

Network Management. The company manages the operation and maintenance of the distribution network, which includes substations, power lines, transformers, and other critical infrastructure.

Customer Service. Kenya Power provides customer support services, addressing inquiries, complaints, and technical issues related to electricity supply.



These three organizations serve different but interconnected roles within Kenya's energy sector. Kenya Power primarily focuses on electricity distribution and retail services, ensuring that electricity reaches end-users. KETRACO specializes in high-voltage electricity transmission and the development of the national grid. REREC has a specific mandate to promote rural electrification and renewable energy.

As they work together in their respective capacities, these organizations collectively contribute to a more inclusive, sustainable, and electrified future for Kenya, where access to reliable and clean energy is a fundamental right for all.

Fostering a Sustainable Future Through Renewable Energy



GM. Renewable Energy, Eng. Fred Ishugab (far right) participating at a panel discussion on accelerating carbon projects in Africa to meet global climate goals during the Africa Climate Summit in Nairobi

By Joy Gichangi

“By training artisans and women groups on renewable energy technologies, REREC promotes bioenergy resources and clean cooking

Vast majority of people these days are aware of the impact of climate change, popularly known as global warming. This awareness is often from first-hand experiences such as unpredictable or extreme weather and rainfall patterns.

Effects of climate change are felt even more by rural communities who depend on agriculture and pastoralism to play a substantial role in their cultural and economic well-being.

With the expectation of escalating climate crises in terms of frequency and intensity, there is need for urgent, community-driven actions that emphasize on knowledge exchange and collaborative problem-solving that will help combat climate change effectively.

Championed by the President of the Republic of Kenya, His Excellency Dr. William Samoei Ruto, C.G.H, Kenya hosted the inaugural Africa

Climate Summit, aimed to address the increasing exposure to climate change and its associated costs, both globally and particularly in Africa.

The Summit, which brought together various Heads of States and other dignitaries, served as a platform to inform, frame, and influence commitments, pledges, and outcomes. It also provided a platform for policymakers, practitioners, businesses and civil society to exchange on climate solutions, barriers to overcome and opportunities realized in different regions

Being the lead agency for promoting all other renewable energy sources except geothermal, attendance and participation of Rural Electrification and Renewable Energy Corporation (REREC) in this summit provided



REREC's Energy Center Staff watering tree seedlings at the Wambungu energy center, Nyeri.

the Corporation with an opportunity to advocate for productive use of renewable energy technologies and highlight their role in mitigating the effects of climate change in rural Kenya.

REREC is climate sensitive and ensures that rural communities in Kenya have access to clean energy. Through the Corporation's 17 energy centres which are spread across the country, we bring potential solutions closer to the communities so that they can buy in and help us mitigate the levels of carbon emissions to the environment. By training artisans and women groups on renewable energy technologies, REREC promotes bioenergy resources and clean cooking

technologies to reduce the use of fossil fuels.

During the Africa Climate Summit 2023, our General Manager Renewable Energy, Eng. Fred Ishugah was one of the panellists that participated in a discussion about accelerating carbon projects in Africa to meet global climate goals. He pointed out that the Corporation is contributing towards reducing carbon emissions by distributing and planting tree seedlings to public facilities to create wood lots which are effective natural carbon sinks.

Renewable energy is the way to go. To foster a sustainable future, let us keep the conversation going.



Delegates visiting the REREC stand during the Africa Climate Summit

The Future is Green



REREC Board Chairman, Mr. Godfrey Lemiso, accompanied by directors; Mr. Milton Lucheri and Mr Phillip Cherige hosting Bungoma County Executive Committee Member (CECM) for Trade, Energy and Industrialization Ms. Carolyne Makali Khalayi. The County recently signed an MOU with REREC for project implementation under the Matching Fund Programme

"A Shilling for a Shilling"

Accelerating Rural Electrification

By Susan Nderitu

Rural Electrification and Renewable Energy Corporation's mandate is to spearhead Kenya's renewable energy drive, in addition to implementing rural electrification projects.

The Corporation, primarily funded through the exchequer, diligently works to fulfill its mandate with the aim of achieving universal connectivity for all. However, the pace of project implementation is hindered by financial constraints.

To address the funding challenge, REREC developed a participatory approach, forging alliances through

“ Since 2016/2017 financial year, the Corporation has executed 847 matching fund projects at a cost of Ksh 2.3 Billion.

cost-sharing arrangements with the National Government Constituency Development Fund (NG-CDF), county governments, and other stakeholders. At the heart of this innovation lies the Matching Fund Program, a game-changer in supplementing traditional funding sources.

Under this program, REREC matches every shilling contributed by stakeholders, up to a maximum of Ksh.5 million per Constituency, on a first-come, first-served basis. The benefits of this program are profound and far-reaching.

The program contributes to elevated County and Constituency connectivity levels, bridging gaps in rural areas by fostering community development. Unlike traditional funding, Counties have the power to prioritize projects based on local needs. With readily available funds, projects that would have taken longer to implement can be prioritized, ensuring a swift transformation.

The Council of Governors hosted the Devolution Conference 2023 from 14th to 18th August 2023 Themed "10 Years of Devolution: The Present and the Future," the conference provided a platform for REREC to showcase the strides made in electrifying rural Kenya and engage county government collectively.

REREC's Board Chairman, Mr. Godfrey Lemiso, accompanied by Board members Milton Lucheri, Hussein A. Mohammed, and Philip Cherige, attended a Frontier Counties Development Council (FCDC) Governor's breakfast meeting. The meeting, held in conjunction with the Swiss Agency for Development and Cooperation (SDC), was organized as part of the conference and brought together various Development Partners engaged with the FCDC region to discuss strategies for advancing mutual goals.

Speaking at the event, Mr. Lemiso encouraged Frontier Counties to join hands with REREC through the Matching Fund Program to enhance electricity connectivity in the region.

The response was overwhelming, with governors, county government officials and other delegates flocking to REREC's stand during the conference, eager to understand how their Counties could benefit from this innovative program.

As a result of these engagements, REREC anticipates a surge in collaborations with County Governments, paving the way toward universal access to electricity. The Corporation, in its quest for 100%

rural electrification, recognizes the indispensable role of County governments in fulfilling its mandate.

Since 2016/2017 financial year, the Corporation has executed 847 matching fund projects at a cost of Ksh 2.3 Billion. The 16 Counties that have participated are; Bomet, Busia, Embu, Kakamega, Kiambu, Kilifi, Kirinyaga, Kisumu, Kitui, Machakos, Makueni, Meru, Nyandarua, Nyeri, Tharaka Nithi and Vihiga.

REREC beckons the remaining counties to join hands, facilitating the acceleration of rural electrification. The Matching Fund Program stands as a testament to the power of collaboration and innovation, lighting up the future for communities across Kenya.



REREC's General Manager, IEC Dr. Rose Mkalama hosted Hon. Farida A. Salim – Kisumu County CECM Trade, Tourism, Industry and Marketing. Kisumu is among the 16 counties already benefiting from Matching Fund programme.



Dr. Rose Mkalama GM, IEC, and Board director Mr. Philip Cherige hosting Homabay delegates at the REREC stand during the Devolution Conference in Eldoret.



Embracing Clean Cooking Technologies: The Fireless Jiko

By Stanely Njaramba

Did you know that indoor air pollution is responsible for 5 % of all female deaths in developing world, causing more deaths than malaria each year?

According to the World Health Organization (WHO), household air pollution (HAP) released by inefficient combustion of solid fuels for cooking and heating is currently responsible for the world's largest single environmentally-related disease burden.

Household air pollution is generated by the use of inefficient and polluting fuels and technologies in and around the home that contains a range of health-damaging pollutants, including small particles that penetrate deep into the lungs and enter the bloodstream. In poorly ventilated dwellings, indoor smoke can have levels of fine particles 100 times higher than acceptable. Exposure is particularly high among women and children, who spend the most time in the kitchen and around pollutants.

“They do not use firewood but work under the three common heat transfer principles which state that heat always & only moves from a region of high heat to one of low heat.

It is therefore very important for us to embrace clean cooking methods so as to reduce on chances of household air pollution. Clean cooking technologies refer to stoves, fuels, and practices that produce fewer harmful pollutants during the cooking process, improving health and environmental outcomes.

With REREC's mandate expanding to spearheading the adoption of renewable energy, we are actively involved in the development and advocacy for clean cooking technologies. Our Energy Centers located across 16 counties provide training and outreach programmes at the grass root level. Some of the technologies that we exhibit in these centers include solar cookers, solar driers, fireless cookers, maendeleo jikos, the Kenya ceramic jikos, among others.

The Fireless cookers are insulated containers that allow food to continue cooking for an extended period of time after being removed from the heat source. They do not use firewood but work under the three common heat transfer principles which state that heat always and only moves from a region of high heat to one of low heat. This means from a hot to a cold region as it can move to a vacuum air-liquid or solid matter by radiation, convection and conduction.

Fabrication Process

At the energy Centers, we fabricate the fireless cookers as one of the clean cooking technologies. We also train individuals and groups on how to fabricate them. This is a simple process that anyone can do by themselves, using locally available materials.

Materials & Tools

- A reed basket, wooden box, plastic bails or baskets,
- Black clothing material, preferably cotton
- Polythene sheet (black if possible)
- Insulation materials (either cotton waste, blanket waste, wood shavings, banana leaves, grass, papers or tailoring wastes thread (glue, tucks and nails for wooden container)
- Tape measure, needles, pair of scissors, sufuria.

Steps To Take

1. Measure the length & width (top of the basket or container you want to use.
2. Spread clothing material and polythene sheet and measure using measurements of the container adding 4" (inches) extra.
3. Cut the clothing material and polythene sheet along the marked measurements.
4. Wrap the container's (reed basket) inner side with old newspapers.
5. Spread enough insulators at the bottom of the container.
6. Spread the polythene sheet then clothing materials in the container ensuring all is covered, and bring the edges to the top opening of the container.
7. Place a 'sufuria' of the desired size inside the container ('sufuria' used determines the size of the cooking chamber)
8. Place more insulators (cotton or blanket waste) between the polythene and container firming it all around.
9. Re-arrange four polythene sheets to hold cotton firmly onto the container.

10. Pull the clothing up to the outside of the container brim (basket) but just up to the wooden container and join the two edges (slide one on top of the other)
11. Start stitching from the joined edges (for a wooden container, glue and tugs are used instead)
12. Continue stitching till you finish the upper part of the container (finishing by joining the remaining two edges, by sliding one on top of the other)
13. Stitch all around the middle of the container.
14. Finish by stitching at the bottom, spreading the clothing properly to create room for cooking and decorating it to make it attractive.
15. For the Lid:

- Fold clothing material into two pieces.
- Mark on material by placing a basket top (upside down)
- Cut along marked line.
- Stitch together the two pieces leaving a small area.
- Turn the lid inside out.
- Stuff in an insulator (cotton) to make it firm.
- Stitch the left gap to seal off the lid

As we advocate for the use of renewable energy, clean cooking tops the list as cooking is a daily activity which consumes a lot of energy. With the fireless cooker, we conserve energy and also practice sustainability.

- Slow cooking retains more of the food's nutrients and vitamins.
- Fuel saving.
- Food can be kept warm for a longer time.
- Food can be left unattended without burning.
- They are multipurpose because depending on the material used, fireless cookers can also be used as coolers.

We have 16 Energy Centers across the country. These centers function as the technical outreach branch of the Rural Electrification and Renewable Energy Corporation (RREC). Their main goal is to promote renewable energy technologies by conducting demonstrations and providing training to communities at the county level.

We encourage you to join the #RenewableEnergyMovement by getting a fireless cooker for yourself or a loved one in the village. Let's save our world by choosing the sustainable option always.




Women's group undergoing a training session on the fireless jiko at the Mtwapa Energy Center.

Implementation of the Citizen's Service Delivery Charter

CITIZENS' SERVICE DELIVERY CHARTER

VISION:
A green energy driven nation

MISSION:
To provide sustainable energy solutions for all through rural electrification and renewable energy for social economic transformation.



PART A: STANDARDIZED COMMON SERVICES

S/No	Customer Support Services	Customer Requirement(s)	Cost of Service	Timeline
1	Response to media correspondence (Inquiries)	+254 709 951 000/600	Free	5 Seconds
2	Response to media correspondence (Inquiries)	Visit REREC offices with National ID/Passport	Free	Within 1 minute of contact
3	Response to media correspondence (Inquiries)	Visit REREC offices with National ID/Passport	Free	1 Working day
4	Response to media correspondence (Inquiries)	Visit REREC offices with National ID/Passport	Free	1 Working day
5	Response to media correspondence (Inquiries)	Visit REREC offices with National ID/Passport	Free	1 Working day
6	Response to media correspondence (Inquiries)	Visit REREC offices with National ID/Passport	Free	1 Working day
7	Response to media correspondence (Inquiries)	Visit REREC offices with National ID/Passport	Free	1 Working day
8	Response to media correspondence (Inquiries)	Visit REREC offices with National ID/Passport	Free	1 Working day
9	Response to media correspondence (Inquiries)	Visit REREC offices with National ID/Passport	Free	1 Working day
10	Response to media correspondence (Inquiries)	Visit REREC offices with National ID/Passport	Free	1 Working day
11	Response to media correspondence (Inquiries)	Visit REREC offices with National ID/Passport	Free	1 Working day
12	Response to media correspondence (Inquiries)	Visit REREC offices with National ID/Passport	Free	1 Working day
13	Response to media correspondence (Inquiries)	Visit REREC offices with National ID/Passport	Free	1 Working day
14	Response to media correspondence (Inquiries)	Visit REREC offices with National ID/Passport	Free	1 Working day
15	Response to media correspondence (Inquiries)	Visit REREC offices with National ID/Passport	Free	1 Working day
16	Response to media correspondence (Inquiries)	Visit REREC offices with National ID/Passport	Free	1 Working day
17	Response to media correspondence (Inquiries)	Visit REREC offices with National ID/Passport	Free	1 Working day
18	Response to media correspondence (Inquiries)	Visit REREC offices with National ID/Passport	Free	1 Working day
19	Response to media correspondence (Inquiries)	Visit REREC offices with National ID/Passport	Free	1 Working day
20	Response to media correspondence (Inquiries)	Visit REREC offices with National ID/Passport	Free	1 Working day
21	Response to media correspondence (Inquiries)	Visit REREC offices with National ID/Passport	Free	1 Working day
22	Response to media correspondence (Inquiries)	Visit REREC offices with National ID/Passport	Free	1 Working day
23	Response to media correspondence (Inquiries)	Visit REREC offices with National ID/Passport	Free	1 Working day
24	Response to media correspondence (Inquiries)	Visit REREC offices with National ID/Passport	Free	1 Working day
25	Response to media correspondence (Inquiries)	Visit REREC offices with National ID/Passport	Free	1 Working day
26	Response to media correspondence (Inquiries)	Visit REREC offices with National ID/Passport	Free	1 Working day
27	Response to media correspondence (Inquiries)	Visit REREC offices with National ID/Passport	Free	1 Working day
28	Response to media correspondence (Inquiries)	Visit REREC offices with National ID/Passport	Free	1 Working day
29	Response to media correspondence (Inquiries)	Visit REREC offices with National ID/Passport	Free	1 Working day
30	Response to media correspondence (Inquiries)	Visit REREC offices with National ID/Passport	Free	1 Working day
31	Response to media correspondence (Inquiries)	Visit REREC offices with National ID/Passport	Free	1 Working day
32	Response to media correspondence (Inquiries)	Visit REREC offices with National ID/Passport	Free	1 Working day
33	Response to media correspondence (Inquiries)	Visit REREC offices with National ID/Passport	Free	1 Working day
34	Response to media correspondence (Inquiries)	Visit REREC offices with National ID/Passport	Free	1 Working day
35	Response to media correspondence (Inquiries)	Visit REREC offices with National ID/Passport	Free	1 Working day
36	Response to media correspondence (Inquiries)	Visit REREC offices with National ID/Passport	Free	1 Working day
37	Response to media correspondence (Inquiries)	Visit REREC offices with National ID/Passport	Free	1 Working day
38	Response to media correspondence (Inquiries)	Visit REREC offices with National ID/Passport	Free	1 Working day
39	Response to media correspondence (Inquiries)	Visit REREC offices with National ID/Passport	Free	1 Working day
40	Response to media correspondence (Inquiries)	Visit REREC offices with National ID/Passport	Free	1 Working day
41	Response to media correspondence (Inquiries)	Visit REREC offices with National ID/Passport	Free	1 Working day
42	Response to media correspondence (Inquiries)	Visit REREC offices with National ID/Passport	Free	1 Working day
43	Response to media correspondence (Inquiries)	Visit REREC offices with National ID/Passport	Free	1 Working day
44	Response to media correspondence (Inquiries)	Visit REREC offices with National ID/Passport	Free	1 Working day
45	Response to media correspondence (Inquiries)	Visit REREC offices with National ID/Passport	Free	1 Working day
46	Response to media correspondence (Inquiries)	Visit REREC offices with National ID/Passport	Free	1 Working day
47	Response to media correspondence (Inquiries)	Visit REREC offices with National ID/Passport	Free	1 Working day
48	Response to media correspondence (Inquiries)	Visit REREC offices with National ID/Passport	Free	1 Working day
49	Response to media correspondence (Inquiries)	Visit REREC offices with National ID/Passport	Free	1 Working day
50	Response to media correspondence (Inquiries)	Visit REREC offices with National ID/Passport	Free	1 Working day
51	Response to media correspondence (Inquiries)	Visit REREC offices with National ID/Passport	Free	1 Working day
52	Response to media correspondence (Inquiries)	Visit REREC offices with National ID/Passport	Free	1 Working day
53	Response to media correspondence (Inquiries)	Visit REREC offices with National ID/Passport	Free	1 Working day
54	Response to media correspondence (Inquiries)	Visit REREC offices with National ID/Passport	Free	1 Working day
55	Response to media correspondence (Inquiries)	Visit REREC offices with National ID/Passport	Free	1 Working day
56	Response to media correspondence (Inquiries)	Visit REREC offices with National ID/Passport	Free	1 Working day
57	Response to media correspondence (Inquiries)	Visit REREC offices with National ID/Passport	Free	1 Working day
58	Response to media correspondence (Inquiries)	Visit REREC offices with National ID/Passport	Free	1 Working day
59	Response to media correspondence (Inquiries)	Visit REREC offices with National ID/Passport	Free	1 Working day
60	Response to media correspondence (Inquiries)	Visit REREC offices with National ID/Passport	Free	1 Working day
61	Response to media correspondence (Inquiries)	Visit REREC offices with National ID/Passport	Free	1 Working day
62	Response to media correspondence (Inquiries)	Visit REREC offices with National ID/Passport	Free	1 Working day
63	Response to media correspondence (Inquiries)	Visit REREC offices with National ID/Passport	Free	1 Working day
64	Response to media correspondence (Inquiries)	Visit REREC offices with National ID/Passport	Free	1 Working day
65	Response to media correspondence (Inquiries)	Visit REREC offices with National ID/Passport	Free	1 Working day
66	Response to media correspondence (Inquiries)	Visit REREC offices with National ID/Passport	Free	1 Working day
67	Response to media correspondence (Inquiries)	Visit REREC offices with National ID/Passport	Free	1 Working day
68	Response to media correspondence (Inquiries)	Visit REREC offices with National ID/Passport	Free	1 Working day
69	Response to media correspondence (Inquiries)	Visit REREC offices with National ID/Passport	Free	1 Working day
70	Response to media correspondence (Inquiries)	Visit REREC offices with National ID/Passport	Free	1 Working day
71	Response to media correspondence (Inquiries)	Visit REREC offices with National ID/Passport	Free	1 Working day
72	Response to media correspondence (Inquiries)	Visit REREC offices with National ID/Passport	Free	1 Working day
73	Response to media correspondence (Inquiries)	Visit REREC offices with National ID/Passport	Free	1 Working day
74	Response to media correspondence (Inquiries)	Visit REREC offices with National ID/Passport	Free	1 Working day
75	Response to media correspondence (Inquiries)	Visit REREC offices with National ID/Passport	Free	1 Working day
76	Response to media correspondence (Inquiries)	Visit REREC offices with National ID/Passport	Free	1 Working day
77	Response to media correspondence (Inquiries)	Visit REREC offices with National ID/Passport	Free	1 Working day
78	Response to media correspondence (Inquiries)	Visit REREC offices with National ID/Passport	Free	1 Working day
79	Response to media correspondence (Inquiries)	Visit REREC offices with National ID/Passport	Free	1 Working day
80	Response to media correspondence (Inquiries)	Visit REREC offices with National ID/Passport	Free	1 Working day
81	Response to media correspondence (Inquiries)	Visit REREC offices with National ID/Passport	Free	1 Working day
82	Response to media correspondence (Inquiries)	Visit REREC offices with National ID/Passport	Free	1 Working day
83	Response to media correspondence (Inquiries)	Visit REREC offices with National ID/Passport	Free	1 Working day
84	Response to media correspondence (Inquiries)	Visit REREC offices with National ID/Passport	Free	1 Working day
85	Response to media correspondence (Inquiries)	Visit REREC offices with National ID/Passport	Free	1 Working day
86	Response to media correspondence (Inquiries)	Visit REREC offices with National ID/Passport	Free	1 Working day
87	Response to media correspondence (Inquiries)	Visit REREC offices with National ID/Passport	Free	1 Working day
88	Response to media correspondence (Inquiries)	Visit REREC offices with National ID/Passport	Free	1 Working day
89	Response to media correspondence (Inquiries)	Visit REREC offices with National ID/Passport	Free	1 Working day
90	Response to media correspondence (Inquiries)	Visit REREC offices with National ID/Passport	Free	1 Working day
91	Response to media correspondence (Inquiries)	Visit REREC offices with National ID/Passport	Free	1 Working day
92	Response to media correspondence (Inquiries)	Visit REREC offices with National ID/Passport	Free	1 Working day
93	Response to media correspondence (Inquiries)	Visit REREC offices with National ID/Passport	Free	1 Working day
94	Response to media correspondence (Inquiries)	Visit REREC offices with National ID/Passport	Free	1 Working day
95	Response to media correspondence (Inquiries)	Visit REREC offices with National ID/Passport	Free	1 Working day
96	Response to media correspondence (Inquiries)	Visit REREC offices with National ID/Passport	Free	1 Working day
97	Response to media correspondence (Inquiries)	Visit REREC offices with National ID/Passport	Free	1 Working day
98	Response to media correspondence (Inquiries)	Visit REREC offices with National ID/Passport	Free	1 Working day
99	Response to media correspondence (Inquiries)	Visit REREC offices with National ID/Passport	Free	1 Working day
100	Response to media correspondence (Inquiries)	Visit REREC offices with National ID/Passport	Free	1 Working day

PART B: CORE MANDATE SERVICES

S/No	Customer Support Services	Customer Requirement(s)	Cost of Service	Timeline
1	Identification of REREC Projects	Provide formal request letter with project details	Free	Quarterly
2	Project design	• Provide customer details • Share copies of ownership/identification documents	Free	Within 28 working days after receipt of approved projects
3	Route survey	Presence of the landowner	Free	Within 28 working days after receipt of forwarding memo
4	Resource acquisition	Consent from the landowner	Free	Within 28 working days after route survey
5	Route pegging	None	Free	Within 10 working days after receipt of project file at the regional office
6	Issuance of route acquisition forms (SRT)	None	Free	Within 7 working days after route pegging
7	Commencement of project construction	None	Free	Within 28 working days after obtaining materials from the stores
8	Inspection and certification of projects by REREC	None	Free	Within 14 working days after formal notification by the Contractor on completion of a milestone
9	Power Distribution Network Digitization (PDN)	None	Free	Within 14 working days on inspection at the regional office
10	Commissioning of REREC Projects	None	Free	28 days after final inspection with RERC as per S.A
11	Reconnection of power supply/Solar for schools	As per approved maintenance schedule & reportage of power outage	Free	Within 45 days of reporting
12	Prevention, maintenance, demonstration, community training of renewable energy technologies/ applications and alternative campaign	Expression of interest	Free	As per approved program
13	Distribution of seedlings	Based on distribution plan	Free	As per the approved distribution plan
14	Sale of seedlings and various energy saving products	Request for quotation	Free	Within 45 days after confirmation of delivery of seedlings by REREC staff
15	Conduct research & disseminate findings	Avenue to journals/publications on REREC's website/semi-annual workshop	Free	3 months after completion of study
16	Promote collaboration linkages with various stakeholders	Request for partnership visit a time	Free	As guided by collaboration agreement in place

WE ARE COMMITTED TO COURTESY AND EXCELLENCE IN SERVICE DELIVERY
Any service rendered that does not conform to the above standards, or any other, and does not live up to our commitment to courtesy and excellence in service delivery should be reported to:

The Chief Executive Officer
Rural Electrification & Renewable Energy Corporation
Kenya Comptroller, South C, of Rail cross road
PO Box 24585-00200 NAIROBI
Email: ceo@rerec.co.ke, complaints@rerec.co.ke or
Website: www.rerec.co.ke


The Comptroller Secretary/Chief Executive Officer
Commission of Administrative Justice 2nd Floor
West End Towers, West End, Ngara, Nairobi
PO Box 24585-00200 NAIROBI
Tel: +254(0)20 2270000/2270000
Email: complaints@commission.go.ke

HUDUMA BORA NI HAKI YAKO

MKATABA WA UTOAJI HUDUMA KWA WANANCHI

RUWAZA:
Kuwa taifa linaloendeshwa na nishati safi

DHAMIRA:
Kutoa suluhu la kudumu la kawi kwa wote kupitia umambazaji umeme mashinani na nishati mabadala ili kuimarisha uchumi.



SEHEMU A: HUDUMA ZA KAWAIDA

S/No	HUDUMA ZINAZOTOLEWA KWA WANANCHI	HWELKEKO ILI UPATE HUDUMA	GHARAPA YA HUDUMA	HUDUMA WA KUTEKELEZA
1	Njira ya kutoa taarifa	+254 709 951 000/ 709 951 600	Bila malipo	Sikundwa 15
2	Njira ya kutoa taarifa	Telefonu au kiti za REREC zinako na kiamalisho chako au Pajepoti	Bila malipo	Chini ya dakika 1 (Mjuzi) ya mawasiliano
3	Njira ya kutoa taarifa	Info@rerec.co.ke, complaints@rerec.co.ke	Bila malipo	Siku 1 (Mjuzi) ya kati
4	Njira ya kutoa taarifa	Website	Bila malipo	Siku 1 (Mjuzi) ya kati
5	Njira ya kutoa taarifa	Ukurasa wa kiti	Bila malipo	Siku 1 (Mjuzi) ya kati
6	Njira ya kutoa taarifa	Ukurasa wa kiti	Bila malipo	Siku 1 (Mjuzi) ya kati
7	Njira ya kutoa taarifa	Ukurasa wa kiti	Bila malipo	Siku 1 (Mjuzi) ya kati
8	Njira ya kutoa taarifa	Ukurasa wa kiti	Bila malipo	Siku 1 (Mjuzi) ya kati
9	Njira ya kutoa taarifa	Ukurasa wa kiti	Bila malipo	Siku 1 (Mjuzi) ya kati
10	Njira ya kutoa taarifa	Ukurasa wa kiti	Bila malipo	Siku 1 (Mjuzi) ya kati
11	Njira ya kutoa taarifa	Ukurasa wa kiti	Bila malipo	Siku 1 (Mjuzi) ya kati
12	Njira ya kutoa taarifa	Ukurasa wa kiti	Bila malipo	Siku 1 (Mjuzi) ya kati
13	Njira ya kutoa taarifa	Ukurasa wa kiti	Bila malipo	Siku 1 (Mjuzi) ya kati
14	Njira ya kutoa taarifa	Ukurasa wa kiti	Bila malipo	Siku 1 (Mjuzi) ya kati
15	Njira ya kutoa taarifa	Ukurasa wa kiti	Bila malipo	Siku 1 (Mjuzi) ya kati
16	Njira ya kutoa taarifa	Ukurasa wa kiti	Bila malipo	Siku 1 (Mjuzi) ya kati
17	Njira ya kutoa taarifa	Ukurasa wa kiti	Bila malipo	Siku 1 (Mjuzi) ya kati
18	Njira ya kutoa taarifa	Ukurasa wa kiti	Bila malipo	Siku 1 (Mjuzi) ya kati
19	Njira ya kutoa taarifa	Ukurasa wa kiti	Bila malipo	Siku 1 (Mjuzi) ya kati
20	Njira ya kutoa taarifa	Ukurasa wa kiti	Bila malipo	Siku 1 (Mjuzi) ya kati
21	Njira ya kutoa taarifa	Ukurasa wa kiti	Bila malipo	Siku 1 (Mjuzi) ya kati
22	Njira ya kutoa taarifa	Ukurasa wa kiti	Bila malipo	Siku 1 (Mjuzi) ya kati
23	Njira ya kutoa taarifa	Ukurasa wa kiti	Bila malipo	Siku 1 (Mjuzi) ya kati
24	Njira ya kutoa taarifa	Ukurasa wa kiti	Bila malipo	Siku 1 (Mjuzi) ya kati
25	Njira ya kutoa taarifa	Ukurasa wa kiti	Bila malipo	Siku 1 (Mjuzi) ya kati
26	Njira ya kutoa taarifa	Ukurasa wa kiti	Bila malipo	Siku 1 (Mjuzi) ya kati
27	Njira ya kutoa taarifa	Ukurasa wa kiti	Bila malipo	Siku 1 (Mjuzi) ya kati
28	Njira ya kutoa taarifa	Ukurasa wa kiti	Bila malipo	Siku 1 (Mjuzi) ya kati
29	Njira ya kutoa taarifa	Ukurasa wa kiti	Bila malipo	Siku 1 (Mjuzi) ya kati
30	Njira ya kutoa taarifa	Ukurasa wa kiti	Bila malipo	Siku 1 (Mjuzi) ya kati
31	Njira ya kutoa taarifa	Ukurasa wa kiti	Bila malipo	Siku 1 (Mjuzi) ya kati
32	Njira ya kutoa taarifa	Ukurasa wa kiti	Bila malipo	Siku 1 (Mjuzi) ya kati
33	Njira ya kutoa taarifa	Ukurasa wa kiti	Bila malipo	Siku 1 (Mjuzi) ya kati
34	Njira ya kutoa taarifa	Ukurasa wa kiti	Bila malipo	Siku 1 (Mjuzi) ya kati
35	Njira ya kutoa taarifa	Ukurasa wa kiti	Bila malipo	Siku 1 (Mjuzi) ya kati
36	Njira ya kutoa taarifa	Ukurasa wa kiti	Bila malipo	Siku 1 (Mjuzi) ya kati
37	Njira ya kutoa taarifa	Ukurasa wa kiti	Bila malipo	Siku 1 (Mjuzi) ya kati
38	Njira ya kutoa taarifa	Ukurasa wa kiti	Bila malipo	Siku 1 (Mjuzi) ya kati
39	Njira ya kutoa taarifa	Ukurasa wa kiti	Bila malipo	Siku 1 (Mjuzi) ya kati
40	Njira ya kutoa taarifa	Ukurasa wa kiti	Bila malipo	Siku 1 (Mjuzi) ya kati
41	Njira ya kutoa taarifa	Ukurasa wa kiti	Bila malipo	Siku 1 (Mjuzi) ya kati
42	Njira ya kutoa taarifa	Ukurasa wa kiti	Bila malipo	Siku 1 (Mjuzi) ya kati
43	Njira ya kutoa taarifa	Ukurasa wa kiti	Bila malipo	Siku 1 (Mjuzi) ya kati
44	Njira ya kutoa taarifa	Ukurasa wa kiti	Bila malipo	Siku 1 (Mjuzi) ya kati
45	Njira ya kutoa taarifa	Ukurasa wa kiti	Bila malipo	Siku 1 (Mjuzi) ya kati
46	Njira ya kutoa taarifa	Ukurasa wa kiti	Bila malipo	Siku 1 (Mjuzi) ya kati
47	Njira ya kutoa taarifa	Ukurasa wa kiti	Bila malipo	Siku 1 (Mjuzi) ya kati
48	Njira ya kutoa taarifa	Ukurasa wa kiti	Bila malipo	Siku 1 (Mjuzi) ya kati
49	Njira ya kutoa taarifa	Ukurasa wa kiti	Bila malipo	Siku 1 (Mjuzi) ya kati
50	Njira ya kutoa taarifa	Ukurasa wa kiti	Bila malipo	Siku 1 (Mjuzi) ya kati
51	Njira ya kutoa taarifa	Ukurasa wa kiti	Bila malipo	Siku 1 (Mjuzi) ya kati
52	Njira ya kutoa taarifa	Ukurasa wa kiti	Bila malipo	Siku 1 (Mjuzi) ya kati
53	Njira ya kutoa taarifa	Ukurasa wa kiti	Bila malipo	Siku 1 (Mjuzi) ya kati
54	Njira ya kutoa taarifa	Ukurasa wa kiti	Bila malipo	Siku 1 (Mjuzi) ya kati
55	Njira ya kutoa taarifa	Ukurasa wa kiti	Bila malipo	Siku 1 (Mjuzi) ya kati
56	Njira ya kutoa taarifa	Ukurasa wa kiti	Bila malipo	Siku 1 (Mjuzi) ya kati
57	Njira ya kutoa taarifa	Ukurasa wa kiti	Bila malipo	Siku 1 (Mjuzi) ya kati
58	Njira ya kutoa taarifa	Ukurasa wa kiti	Bila malipo	Siku 1 (Mjuzi) ya kati
59	Njira ya kutoa taarifa	Ukurasa wa kiti	Bila malipo	Siku 1 (Mjuzi) ya kati
60	Njira ya kutoa taarifa	Ukurasa wa kiti	Bila malipo	Siku 1 (Mjuzi) ya kati
61	Njira ya kutoa taarifa	Ukurasa wa kiti	Bila malipo	Siku 1 (Mjuzi) ya kati
62	Njira ya kutoa taarifa	Ukurasa wa kiti	Bila malipo	Siku 1 (Mjuzi) ya k

- d) Establish compliance mechanisms to ensure conformity with the commitments and standards in the charter. This includes maintaining records of service delivery and upholding accountability.

2 Review of the Charter

To ensure that the Citizens' Service Delivery Charter aligns with REREC's expanded mandate under the Energy Act 2019 and meets the requirements of the Public Service Commission, an ongoing review process has been ongoing. The Public Service Commission is collaborating with public sector organizations to ensure uniformity in charters regarding common services provided by the public sector. The aim is to effectively cover mandate services and meet the public's needs.

3 Cascading the Charter to Departmental Levels

To enhance implementation effectiveness, the Citizens' Service Delivery Charter will be cascaded to departmental levels within REREC. This ensures that all REREC services are covered, with each department displaying and adhering to the commitments and standards outlined in the charter. By doing so, REREC aims to provide consistent and high-quality services across all departments.

In conclusion, by implementing the charter, REREC demonstrates its dedication to delivering quality services, building trust, promoting inclusivity, and continuously improving the customer experience.

You can access the citizen's service charter on our website www.rerec.co.ke





Emotional Wellness

Nurturing Your Inner Balance

By Sarah Belinder

Emotional wellness is a vital component for our overall well-being, encompassing the ability to understand, manage, and express our emotions effectively. It plays a crucial role in how we navigate life's challenges, form meaningful relationships, and maintain a sense of contentment and resilience. Cultivating emotional wellness is not just about being happy all the time; it's about developing the skills and mindset to handle a full spectrum of emotions in a healthy and constructive way.

“There is hope, even when your brain tells you there isn't. ~John Green.

Self-awareness is at the core of emotional wellness. Understanding your emotional landscape means recognizing and acknowledging your feelings without judgment. This introspective practice allows you to identify the sources of your

emotions, whether they are rooted in past experiences, current stressors, or your immediate environment. When you're in tune with your emotions, you can respond more thoughtfully and authentically to them.

Emotional Intelligence (EI) is another essential aspect of emotional wellness. EI involves recognizing and understanding not only your emotions but also the emotions of others. It enables you to navigate social interactions, build empathy, and communicate effectively. Developing emotional intelligence can lead to better relationships, reduced conflict, and improved collaboration in both personal and professional settings.

Stress management is a key skill in maintaining emotional wellness. Life is filled with stressors, and how you respond to them can significantly impact your emotional state. Techniques like mindfulness meditation, deep breathing exercises, and time management can help reduce stress levels. Learning to set boundaries and say "no" when necessary is also crucial in preventing burnout and maintaining emotional balance.

Cultivating a strong support system is another component of emotional wellness. Sharing your thoughts and feelings with trusted friends or a therapist can provide valuable insights and emotional relief. Social connections not only offer emotional support but also provide a sense of belonging and purpose, which are essential for overall well-being.

Engaging in activities that bring joy and fulfillment is a fundamental aspect of emotional wellness. Hobbies, creative pursuits, physical exercise, and spending time in nature can boost your mood and provide a sense of accomplishment. These activities promote the release of endorphins, natural mood-enhancing chemicals in the brain.

Practicing self-compassion is essential in nurturing emotional wellness. Be kind to yourself, acknowledge your imperfections, and understand that it's okay to experience negative emotions. Self-compassion allows you to bounce back from setbacks and failures with greater resilience.

In summary, emotional wellness is a dynamic and ongoing process that involves self-awareness, emotional intelligence, stress management, a strong support system, engaging in enjoyable activities, and practicing self-compassion. It's about embracing the full range of human emotions, learning from them, and using that knowledge to lead a more fulfilling and balanced life. By investing in your emotional well-being, you can enhance your overall quality of life and better navigate the complexities of the human experience.



Through the Lens



Ms. Wangari Githii Manager Advocacy, hosting stakeholders at the REREC stand during the Africa Climate Summit (ACS) 2023 where REREC was promoting the adoption of renewable energy for electrification of off-grid areas.



The Corporation's Board Chairman, Mr. Godfrey Lemiso, accompanied by Board members Milton Lucheri and Hussein A. Mohammed, and senior management at the REREC stand during the Devolution Conference in Eldoret, Uasin Gishu County.

Through the Lens



Awarding ceremony for the #myrenewableenergychampion which was held at REREC headquarters. The winners were appreciated advocating for the use of renewable energy for a sustainable future and participating in the social media campaign. The awards were presented by REREC's senior managers led by Sophia Githuku; GM Human Resource & Administration, and Davis Cheruiyot, GM Finance & ICT.



REREC staff and Board members during the first staff meeting this year where all staff from across the country, including regional offices and Energy Centers, congregated to celebrate the shared vision and commitment to excellence.

Sudoku

	9					6	5	1
3	7			8				
		1	9					
					6	3		
6	3		2					
4				5		9		6
				4			2	
			5	3				4
	5		8					

Fill in the Sudoku grid of 9 x 9 with Each row, column and square (9 spaces each) needs to be filled out with the numbers 1-9, without repeating any numbers within the row, column or square.

Word Search

F	L	O	W	E	R	S	S	H	H	R	A	Q	Q	U
J	O	X	M	T	I	B	B	A	R	M	E	S	J	T
M	E	B	C	A	N	D	Y	D	O	P	R	O	A	T
S	A	J	O	R	A	D	I	A	T	R	K	I	Y	X
L	S	U	M	O	O	N	D	O	S	T	K	K	S	O
E	T	T	Q	C	N	F	C	G	Y	E	V	V	R	E
N	E	W	B	E	G	I	N	N	I	N	G	S	S	J
T	R	O	R	D	H	W	C	O	P	N	N	U	U	B
X	E	T	A	L	O	C	O	H	C	O	T	U	A	C
U	G	S	V	A	D	S	A	L	I	B	S	S	B	U
T	G	N	Z	M	R	N	P	C	L	C	K	P	S	M
J	D	V	I	B	P	A	R	A	D	E	K	C	D	E
I	N	M	U	R	M	R	I	Q	T	R	Y	T	U	V
A	A	U	S	G	P	O	L	L	R	A	H	S	G	D
W	F	R	I	F	E	S	R	V	W	H	A	G	U	U

On a Light Note





Beware of Fraudsters!

The Corporation has noted that there are fraudsters who are calling, sending texts and emails to susceptible Kenyans asking for money to be shortlisted for the recently advertised positions. It has also come to our attention that some job seekers have supposedly been invited for interviews at the Corporation's offices, by people purporting to be the Corporation's representatives.

While it is true that we recently advertised for qualified personnel to fill various open positions, the Corporation wishes to notify all the applicants that we are at the preliminary stage of recruitment and therefore, there are no ongoing interviews at the moment.

To cross check any information you receive, please contact us on **0709 193 600 / 0709 193 000** or send an email to **info@rerec.co.ke**.

DO NOT BE CONNED.

The Highlight

Quarterly Newsletter



HEAD OFFICE

Rural Electrification & Renewable Energy Corporation

Kawi Complex, South C
P. O. Box 34585 – 00100 Nairobi, Kenya.
Cell: 0709 193 000/0709 193 600
Email: info@rerec.co.ke.
Website: www.rerec.co.ke

Regional Offices

CENTRAL RIFT REGIONAL OFFICE

Giddo Plaza, George Morara Road C
P. O. Box 16662, Nakuru.
Cell Phone: 0719 607 977
Email: centralrift@rea.co.ke

EASTERN & NORTHERN KENYA OFFICE

Off Mombasa road, Near JKIA turn-off
P. O. Box 34585 – 00100
Cell Phone: 0709 193 000/3600
Email: easternkenya@rea.co.ke

WESTERN KENYA REGIONAL OFFICE

Kondele (Carwash) – Kibos Road
P. O. Box 2604 – 0040100 Kisumu
Cell Phone: 0719 607 436
Email: westernkenya@rea.co.ke

MT. KENYA REGIONAL OFFICE

1st Floor, Advocate Plaza, off Kamakwa Road,
P. O. Box 1970, Nyeri
Cell Phone: 0719 608 139
Email: mt.kenya@rea.co.ke

SOUTH NYANZA REGIONAL OFFICE

Located within Kisii ATC
P.O. Box 2238 - 40200 Kisii
Cell Phone: 0709 193 440

NORTH RIFT REGIONAL OFFICE

Kiptagich House, 9th Floor, off Uganda Road,
P. O. Box 3015 – 30100, Eldoret.
Cell Phone: 0719 608 207
Email: northrift@rea.co.ke

COAST REGIONAL OFFICE

Mtwapa, Kilifi County
P. O. Box 32 - 80109 Mtwapa
Cell Phone: 0719 608 086

Energy Centres

Bukura Energy Centre
Within Bukura ATC
P.O. Box 92-50105 Bukura

Jamhuri Energy Centre
Nairobi, showground
P.O. Box 21552-00505 Nairobi

Lodwar Energy Centre
Off Lodwar to Lorgun road
P.O. Box 501-30500 Lodwar

Mirangine Energy Centre
Mirangine, Nyandarua County
P.O. Box 142-20124 Mirangine

Busia Energy Centre
Busia Town next to Busia Market
P.O. Box 421-50400 Busia

Kericho Energy Centre
Off Kisumu road
behind Siloam Hospital
P.O. Box 1959-20200 Kericho

Marsabit Energy Centre
Within Marsabit County
Commissioners Office
P.O. Box 143-60500 Marsabit

Mtwapa Energy Centre
Mtwapa, Kilifi County
P. O. Box 32 - 80109 Mtwapa

Garissa Energy Centre
Off Garissa to Sankuri Road
P.O. Box 1253-70100 Garissa

Kisii Energy Centre
Within Kisii ATC
P.O. Box 2238-40200 Kisii

Migori Energy Centre
Migori town next to the County HQ
P.O. Box 329-40400 Migori

Wajir Energy Centre
Wajir town
P.O. Box 414 - 70200 Wajir

Uasin Gishu Energy Centre
next to Kiplombe cemetery
P.O. Box 9050-30100 Eldoret

Kitui Energy Centre
Next to Kitui High School
P.O. Box 737-90200 Kitui

Mitunguu Energy Centre
Mitunguu market
P.O. Box 232-60204 Mitunguu

Wambugu Energy Centre
Within Wambugu Farm,
Off Nyeri - Karatina road
P.O. Box 1400-10100 Nyeri



RERECKenya



RERECMashinani



REREC_Kenya



REREC